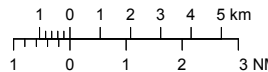


**VISUAL APPROACH CHART - ICAO**

1:250000



**AD ELEV 47 FEET**

ELEV and ALT in ft  
HGT in ft above AD ELEV

**TA 5000 AMSL**

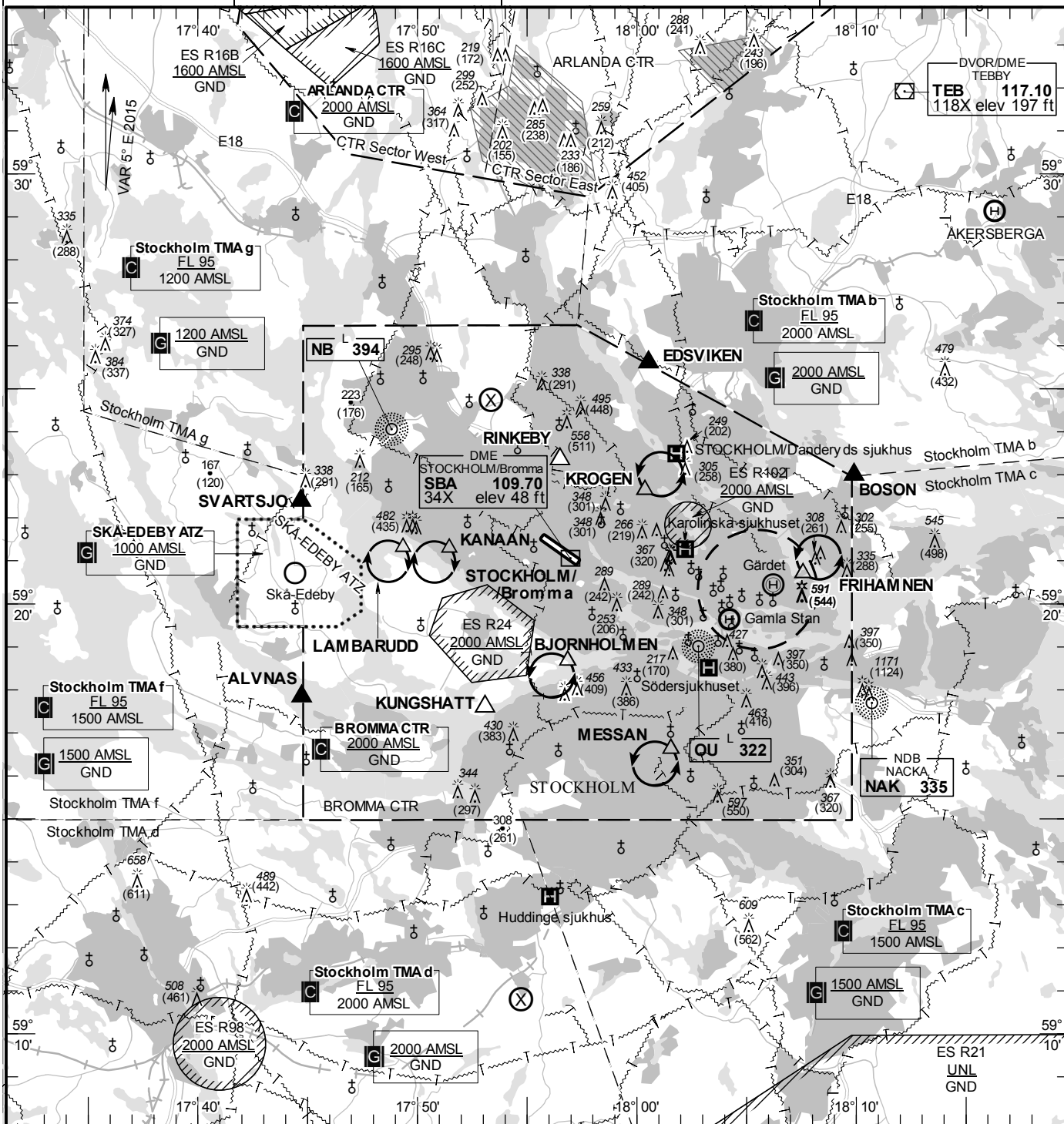
**BROMMA TOWER 118.100**

**BROMMA GROUND 121.600**

**BROMMA ATIS 122.450**

**AD 2 ESSB 6-1**

**STOCKHOLM/Bromma SWEDEN**



**Communication failure**  
See page AD 2-ESSB-6-3/4

**Remark**  
Obstacles below 197 ft AGL not shown in CTR.

**Entry / exit point**

EDSVIKEN	592536N 0180032E
BOSON	592259N 0180954E
ALVNAS	591750N 0174444E
SVARTSJO	592223N 0174442E

RWY NR	THR ELEV	PAPI (MEHT)
12	45.7 ft	Left/3.50° (56 ft)
30	42.0 ft	Left/3.50° (38 ft)

**Legend**  
See GEN 2.3

**Reporting point**

RINKEBY	592320N 0175630E
KUNGSHATT	591735N 0175305E

**Holding**

- KROGEN:** Hold over intersection between roads E18 and E4, north east of point 592237N 0180023E
- FRIHAMNEN:** Hold over the harbour Frihamnen, north east of point 592041N 0180735E
- MESSAN:** Hold over the exhibition hall, south west of point 591636N 0180133E
- BJORNHOLMEN:** Hold over Björnholmen, south west of point 591839N 0175651E
- KANAAN:** Hold over the swimming area Kanaanbadet, south west of point 592117N 0175127E
- LAMBARUDD:** Hold over Lambaruudd, south west of point 592118N 0174921E